

PLAN No. 1223

1223

PLAN No.

PART S.E. 1/4 SEC. 5 - 1 - 1 W.P.M.

P.T.H. No. 30
PLAN No. 2090

30

P. T. H. No.

1608

No.

PLAN

No.

SEVENTH STREET

STREET

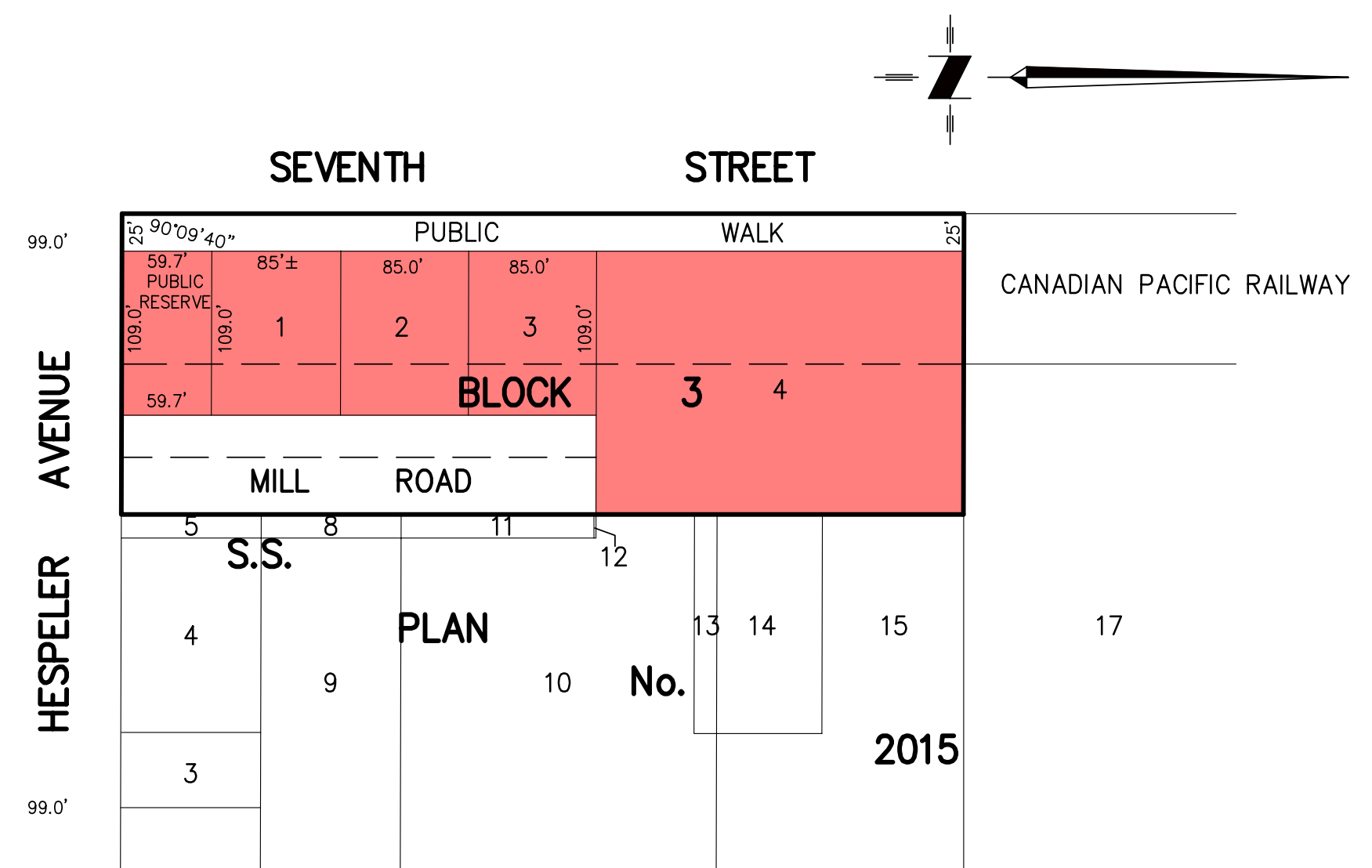
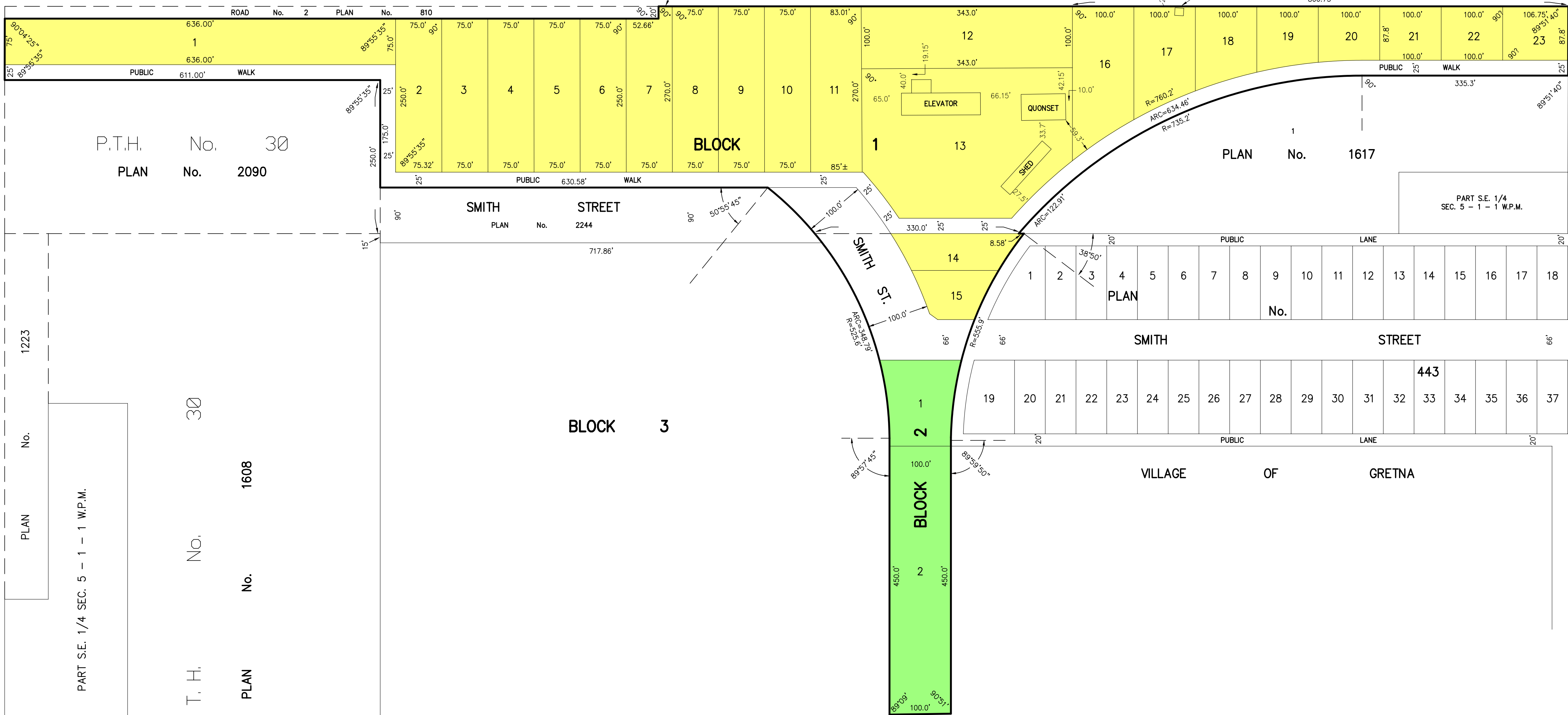
SMITH STREET

SMITH ST.

SMITH STREET

VILLAGE OF GRETN

PART S.E. 1/4 SEC. 5 - 1 - 1 W.P.M.



PROPOSED PLAN OF SUBDIVISION
PART E. 1/2 Sec. 5-1-1 W.P.M.
BEING PART PLAN 375 W.L.T.O., AND
LOTS 6, 7 & 16. PLAN 2015 M.L.T.O.
VILLAGE OF GRETN